

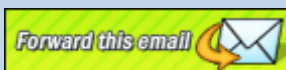
eNewsletter ▶

Colorado Department of Transportation

February 2017

### In This Issue

- [Upper Fountain Creek](#)
- [Weather Impacts](#)
- [Last Bridge Demolition](#)



Please forward/share this email with others who may have an interest in the I-25/Cimarron Interchange project.

### Project Schedule

- Phase 0 Construction (offline): complete
- Phase 1 Construction (mainline work): completed Fall 2016
- Phase 2 Construction: Late 2016 to Summer 2017
- Operationally complete: December 2017

### Stay Connected

Website:  
[Colorado Info Project](#)  
Email:  
[dot\\_i25Cimarron@state.co.us](mailto:dot_i25Cimarron@state.co.us)  
Hotline: (719) 302-6781  
To receive project updates and construction notices, send an email to:  
[dot\\_i25Cimarron@state.co.us](mailto:dot_i25Cimarron@state.co.us)

### Quick Links

- [Project Website](#)
- [CDOT Website](#)

## Upper Fountain Creek Gets New Look as I-25 Cimarron Interchange Project Progresses



Photo Credit: THK Associates, Inc. - Feb. 2017

One of the goals of the I-25 & Cimarron (US 24) Interchange Design-Build Project involves making the area aesthetically pleasing and compatible with the current and future amenities and enhancements in and around the interchange. That goal also includes expanding Upper Fountain Creek to convey 100-year FEMA flow rates. This project provides for new and enhanced trails, pedestrian creek-crossing bridges, and increased visibility of the creeks from roadways and paths, along with other planned elements that expand and conserve riparian buffer zones. The Upper Fountain Creek restoration is being closely coordinated with the U.S. Army Corps of Engineers, the El Paso County Floodplain administrator, and other agencies. In addition, Colorado Parks and Wildlife is working cooperatively on the project with plans for future trout movements upstream in Upper Fountain Creek.

## Sign Up to Receive E-newsletters / eAlerts

To receive future I-25/Cimarron project e-newsletters and construction notices, send an email to [dot\\_i25Cimarron@state.co.us](mailto:dot_i25Cimarron@state.co.us).

Share this e-newsletter:  
[Download PDF](#)

## Prioritized Project Goals

Project goals were established and approved by the Executive Oversight Committee. The goals provide direction to the project team and to the design-build contractor team.

### Project Goals

1. Maximize overall safety, capacity and operation of the interchange and the surrounding transportation network within the Project budget;
2. Complete Project construction to be fully operational December 2017;
3. Minimize impacts and inconvenience to the community, motorists, businesses, downtown and the public during construction; and
4. Achieve an aesthetically pleasing design compatible with current and future amenities and enhancements in and around the interchange.

## Remaining Key Elements of Work

Prior to project completion, which is scheduled for late 2017, there are still several key elements of work left to complete. These include as follows (please remember to watch for weekly eAlerts for the most timely information about



Fish Panels on Pikes Peak Greenway Trail - Photo Credit: THK Associates, Inc. - Feb. 2017

The I-25/ Cimarron creek and trail work aligns with the Fountain Creek Corridor Restoration Master Plan (2011), providing greater recreation opportunities by creating a community and regional amenity in Fountain Creek. In support of the goal of connecting America the Beautiful Park with Fountain Creek, the City of Colorado Springs recently constructed the Creekside Environmental Playground on the east bank of the creek, immediately adjacent to the I-25/Cimarron interchange project site.

### **Challenges:**

Many challenges are inherent in the interchange reconstruction project due to the three creeks running through the project site. Water flows must occasionally be temporarily diverted to allow for bridge and creek work to be performed. To minimize environmental impact during construction, the project team carefully plans and performs work to comply with State and CDOT construction stormwater discharge permits, groundwater dewatering permits, 404 permits administered by the U.S. Army Corps of Engineers that regulate any work performed within the creeks, a State quality air permit, and other requirements required by the National Environmental Policy Act (NEPA).



Jan. 2016



upcoming work and anticipated traffic impacts):

- Finish the northbound I-25 bridge and northbound I-25 on-ramp bridge
- Complete the Cimarron Street/US 24 intersection under I-25 and install new, permanent traffic signals
- Final paving and landscaping
- Trail enhancements
- Upper Fountain Creek improvements

You Can Also Expect:

- Speed reduction to 55 mph on I-25 between Colorado Avenue and south Nevada/Tejon Street and 30 mph speed reduction on US 24 between 8th Street and I-25
- Narrowed lanes and reduced shoulders
- Three lanes maintained northbound and southbound I-25 during the day

### Project Partners

- Colorado Department of Transportation
- Federal Highway Administration
- City of Colorado Springs
- El Paso County
- The Community

### What the Project Involves

Planned improvements include reconstructing I-25 between Colorado Avenue (to the north) and the Nevada Avenue/Tejon Street interchange (to the south), and include a continuous northbound travel lane between the south Nevada Avenue/ Tejon Street interchange and the Cimarron interchange. Project boundaries on Cimarron are

Other regulations address relocation of the Midland Trail, consultation with Colorado Parks and Wildlife regarding fish movements that must be maintained in Upper Fountain Creek, and preventing fish movements in Bear Creek to protect the greenback cutthroat trout upstream. Creeks are temporarily diverted, when necessary to perform construction, in a manner that minimizes impacts to water quality and the surrounding creek channel. These diversions and required dewatering are permitted by the U.S. Army Corps of Engineers and the Colorado Department of Public Health and Environment.



US 24 Bridge Over Upper Fountain Creek

The anticipated restoration of Upper Fountain Creek between 8th Street and the confluence of Fountain Creek with Monument Creek is part of the I-25/Cimarron Project plan. The US 24 bridge over Upper Fountain Creek has already been replaced providing adequate channel height of Upper Fountain Creek under US 24 to minimize flooding potential. Several drop structures between 8th Street and US 24 will be installed, as well as construction of a natural channel design of Upper Fountain Creek. The design includes a low flow channel with increased sinuosity, bank sloping, willow plantings, and healthy riparian areas, in line with the Upper Fountain Creek and Cheyenne Creek Flood Restoration Master Plan (2015), while conveying the 100-year flood condition within a stable natural channel. The riparian areas function as an improved buffer between the creek channel and the adjacent dense urban areas and roadways.

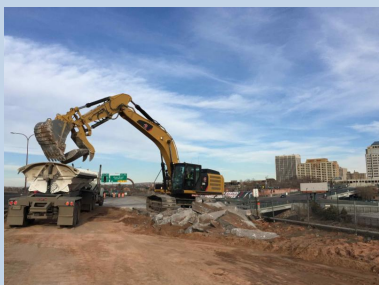
### Collaborative Partners:

The City of Colorado Springs and El Paso County are collaborative partners on the I-25/Cimarron (US24) Interchange Design-Build Project. CDOT, the City, and the County have held numerous meetings with local community representatives and groups discussing aesthetic and functional features of the project. Pre-project coordination with the Army Corps of Engineers, the Colorado Department of Parks and Wildlife, and the Colorado Department of Public Health and Environment have also been critical to project success, with ongoing discussions to ensure creek improvements are

between 8<sup>th</sup> Street to the west and the Cimarron bridge over Fountain Creek to the east. Once construction is complete in 2017, the project will provide:

- Improved interstate and interchange operations and safety;
- Improved highway alignment and improved ramps, acceleration/deceleration lanes for increased vehicle storage and safety;
- New I-25 bridge structures;
- New connection between 8th Street and Cimarron Street;
- Improved trail connectivity and aesthetic treatments.
- Reconstruction of approximately 2,100 feet of Upper Fountain Creek, enhancing stream habitat.

### Progress Photos



Concrete removal on northbound I-25



Photo Credit: THK Associates, Inc.

Construction activity on northbound I-25 bridge area

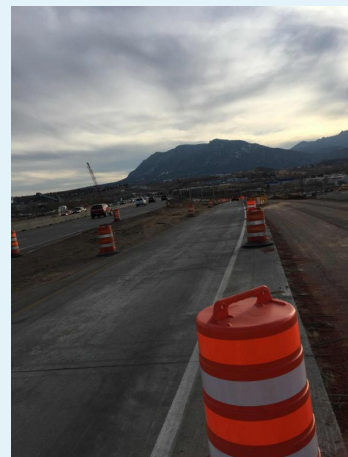
performed in ways most beneficial to the environment, the habitat and the community.



### Weather Impacts to Traffic Control -- It Takes a Team

Winter brings many new challenges for construction, however the I-25/Cimarron project maintains efficient traffic control throughout all seasons of the year.

Take lane striping, for example. Lane striping is a maintenance activity that is very weather sensitive. Once traffic shifts are implemented, it's important to get the restriping of lane lines done quickly. Then there's the occasion where striping touch-ups are necessary based on everyday wear and tear. To complicate things further, striping is an activity ideally



done at night to minimize impacts to the traveling public with alternating lane restrictions. Temperature also plays a critical role as restriping cannot be done during extreme cold temperatures or with any sort of precipitation because the paint will freeze thus not sticking to the pavement. The project team constantly monitors striping on I-25 and Cimarron Street/US 24 and makes improvements as needed.

"There have been situations on this project as well as others in the state when the striping we laid down disappeared a day or so later due to cold weather and snowplowing. As a team, we responded immediately to the problem as a top priority. When this happened in late January, within a few hours we had crews out





Photo Credit: THK Associates, Inc.

restriping the problem areas," said Dave Watt, CDOT Resident Engineer. "We appreciate calls from the public who may see the situation before the project team or CDOT Maintenance has gotten out."

Traffic control devices are another maintenance necessity. Signage and protection devices are essential on any construction project especially with new traffic patterns in place. During the January high windstorms, project crews were out the next morning adjusting the devices and repairing/replacing signs. During snow, passing vehicles and plows splash mud onto signage and devices, impacting visibility. The project team watches out for this, cleaning or replacing signage/devices regularly ensuring signs can be easily read and roadways are delineated.




It takes a team to assure traffic control is monitored day and night so that traffic travels safely and efficiently through the project limits. We encourage driving slowly and observing posted speed limit signs with changing traffic patterns in place. These posted signs and messaging help to guide motorists safely through the area.

### Last Bridge Demolition - Cimarron Bridge over Lower Fountain Creek



Through use of excavators, hydraulic hammers and loaders, the old Cimarron bridge over Fountain Creek was demolished. This operation took approximately 250

 Like us on Facebook

Follow us on 

man-hours, over three days to remove the bridge and another couple of days to haul the material offsite.

Working so close to Fountain Creek brought on environmental challenges of it's own. Environmental protection is a priority for the team which therefore implemented mitigation measure to ensure no debris fell into the creek. To guarantee this, the project team had to divert Fountain Creek through the use of old concrete barrier and filter fabric capped with crushed rock.



Feb. 2017

Overall, this was a successful operation for the I-25/Cimarron project and another milestone!

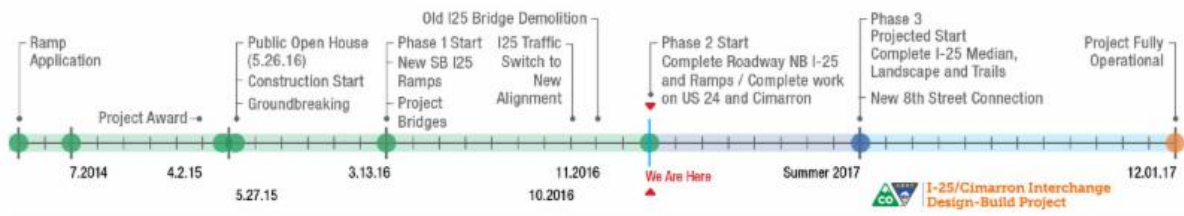
The Cimarron Bridge over lower Fountain Creek is one of seven total roadway and pedestrian bridges part of the I-25/Cimarron project. The other six bridges include:

- I-25 over Cimarron Street
- Northbound and southbound off-ramps over Fountain Creek
- US 24 over Upper Fountain Creek
- Pedestrian Bridge over Monument Creek
- Pedestrian Bridge over Upper Fountain Creek

---

## Additional Project Information

For more information about the project, visit the [CDOT website project page](#). To receive future I-25/Cimarron project e-newsletters and construction notices, send an email to [dot\\_i25Cimarron@state.co.us](mailto:dot_i25Cimarron@state.co.us).



[CLICK HERE](#) to enlarge.

To safely UNSUBSCRIBE from this project e-newsletter only, send an email to [Lisa@bachmanpr.com](mailto:Lisa@bachmanpr.com). This removes you from receiving information about this project only, but assures you continue to receive e-newsletters about other projects you signed up for in the past. SafeUnsubscribe below removes you from receiving ALL project e-newsletters.

Colorado Department of Transportation, 1480 Quail Lake Loop, COLORADO SPRINGS, CO 80906

SafeUnsubscribe™ {recipient's email}

[Forward this email](#) | [Update Profile](#) | [About our service provider](#)

Sent by [lisa@bachmanpr.com](mailto:lisa@bachmanpr.com) in collaboration with



Try it free today